

# Gånglåt

Cornet in B $\flat$

Berit Palmquist

7

1. 2. Fine

13 *cantabile*

21 D.S.

# Gånglåt

Cornet in B $\flat$

Berit Palmquist

1.

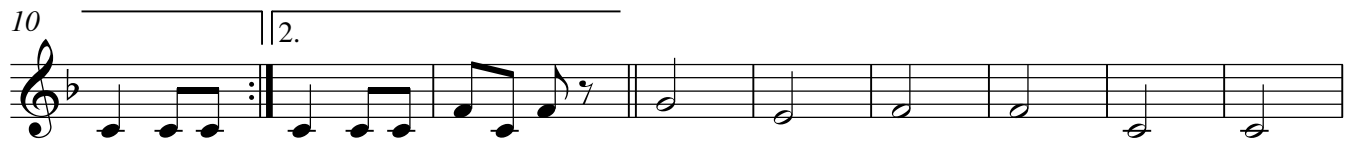
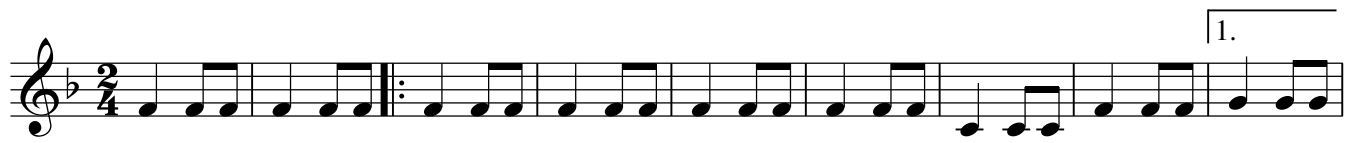
10 2.

19 **D.S**

# Gånglåt

Bass in B $\flat$

Berit Palmquist



# Gånglåt

Bass in Eb

Berit Palmquist

1.

10 | 2.

19 **D.S**

# Gånglåt

Berit Palmquist

Score for **Gånglåt** by Berit Palmquist, featuring seven brass instruments in 2/4 time. The score is divided into two measures by a repeat sign with a first ending bracket. A section symbol (S) is placed above the first measure of the second system.

The instruments and their parts are:

- Cornet in B♭**: Treble clef, 2/4 time. First measure: quarter rest, eighth rest, eighth note. Second measure: quarter note, eighth note, eighth note. Third measure: quarter note, eighth note, eighth note. Fourth measure: quarter note, eighth note, eighth note. Fifth measure: quarter note, eighth note, eighth note. Sixth measure: quarter note, eighth note, eighth note. Seventh measure: quarter note, eighth note, eighth note. Eighth measure: quarter note, eighth note, eighth note.
- Cornet in B♭**: Treble clef, 2/4 time. First measure: quarter note, eighth note, eighth note. Second measure: quarter note, eighth note, eighth note. Third measure: quarter note, eighth note, eighth note. Fourth measure: quarter note, eighth note, eighth note. Fifth measure: quarter note, eighth note, eighth note. Sixth measure: quarter note, eighth note, eighth note. Seventh measure: quarter note, eighth note, eighth note. Eighth measure: quarter note, eighth note, eighth note.
- Tenor Horn**: Treble clef, 2/4 time. First measure: quarter note, eighth note, eighth note. Second measure: quarter note, eighth note, eighth note. Third measure: quarter note, eighth note, eighth note. Fourth measure: quarter note, eighth note, eighth note. Fifth measure: quarter note, eighth note, eighth note. Sixth measure: quarter note, eighth note, eighth note. Seventh measure: quarter note, eighth note, eighth note. Eighth measure: quarter note, eighth note, eighth note.
- Tenor Horn**: Treble clef, 2/4 time. First measure: quarter rest, eighth rest, eighth note. Second measure: quarter note, eighth note, eighth note. Third measure: quarter note, eighth note, eighth note. Fourth measure: quarter note, eighth note, eighth note. Fifth measure: quarter note, eighth note, eighth note. Sixth measure: quarter note, eighth note, eighth note. Seventh measure: quarter note, eighth note, eighth note. Eighth measure: quarter note, eighth note, eighth note.
- Baritone**: Treble clef, 2/4 time. First measure: quarter rest, eighth rest, eighth note. Second measure: quarter note, eighth note, eighth note. Third measure: quarter note, eighth note, eighth note. Fourth measure: quarter note, eighth note, eighth note. Fifth measure: quarter note, eighth note, eighth note. Sixth measure: quarter note, eighth note, eighth note. Seventh measure: quarter note, eighth note, eighth note. Eighth measure: quarter note, eighth note, eighth note.
- Bass in E♭**: Treble clef, 2/4 time. First measure: quarter note, eighth note, eighth note. Second measure: quarter note, eighth note, eighth note. Third measure: quarter note, eighth note, eighth note. Fourth measure: quarter note, eighth note, eighth note. Fifth measure: quarter note, eighth note, eighth note. Sixth measure: quarter note, eighth note, eighth note. Seventh measure: quarter note, eighth note, eighth note. Eighth measure: quarter note, eighth note, eighth note.
- Bass in B♭**: Treble clef, 2/4 time. First measure: quarter note, eighth note, eighth note. Second measure: quarter note, eighth note, eighth note. Third measure: quarter note, eighth note, eighth note. Fourth measure: quarter note, eighth note, eighth note. Fifth measure: quarter note, eighth note, eighth note. Sixth measure: quarter note, eighth note, eighth note. Seventh measure: quarter note, eighth note, eighth note. Eighth measure: quarter note, eighth note, eighth note.

8

1. | 2. Fine

*cantabile*

This musical score block covers measures 8 through 15. It consists of seven staves. The first staff is in treble clef, and the remaining six are in bass clef. The key signature has one flat. The score is divided into two first endings (1. and 2.) and a 'Fine' section. The tempo/mood is marked 'cantabile'. The first ending (1.) spans measures 8-10, and the second ending (2.) spans measures 11-12. The 'Fine' section spans measures 13-15.

16

This musical score block covers measures 16 through 23. It consists of seven staves. The first staff is in treble clef, and the remaining six are in bass clef. The key signature has one flat. The music consists of a single melodic line in the first staff and a supporting accompaniment in the other six staves.

A musical score consisting of seven staves, likely for a piano and string ensemble. The score is written in a key signature of one flat (B-flat) and a common time signature (C). The music is organized into six measures. The first measure contains a sharp sign (#) on the second staff. The notation includes various note values such as quarter notes, eighth notes, and sixteenth notes, along with rests and dynamic markings like accents. The piece concludes with a double bar line at the end of the sixth measure.

# Gånglåt

Tenor Horn

Berit Palmquist





# Gånglåt

Baritone

Berit Palmquist

7

1. 2.

13

21

D.S

# Gånglåt

Tenor Horn

Berit Palmquist

7

13

21

D.S